



Oils and Varnish

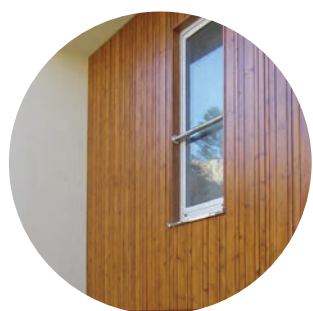
wood maintenance

Our partnership with Rikor allows us to have in permanent stock a great variety of finishing/painting products for outdoor and indoor spaces.

We have our wide range of different products adapted to a number of market situation, from polyurethanes to aqueous, acrylic, etc.

Our range includes colourless and pigmented varnishes, diluents, wood stain, pore-sealant, Impregnation oils, lacquers, bitumen and glass painting.

With these products **GLOBALDIS** aims to satisfy, even more, its costumers meeting their needs



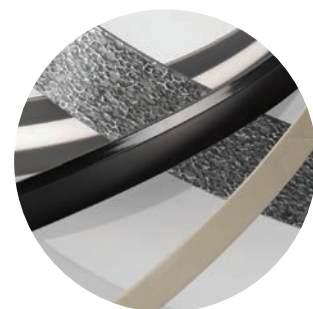
Edges

abs, pvc or wood veneer

The edges are essential complements for any type of finishing in panels whether they are coated with natural leaf, melamine or high pressure laminate.

This product is easy to use, and can be applied manually or with edge banders.

In stock, we have a wide range of edges (wood veneer, pvc or abs), according with the needs and tastes of the client.



NDCGD201320

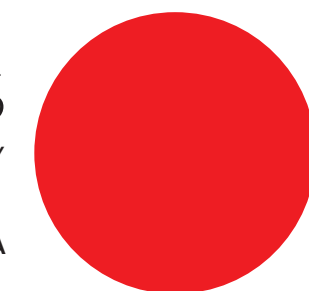


Components

for wood and metal hardware

GLOBALDIS
FOR YOU, TODAY

GRUPO VICAIMA



GLOBALDIS - Distribuição global de materiais, S.A.

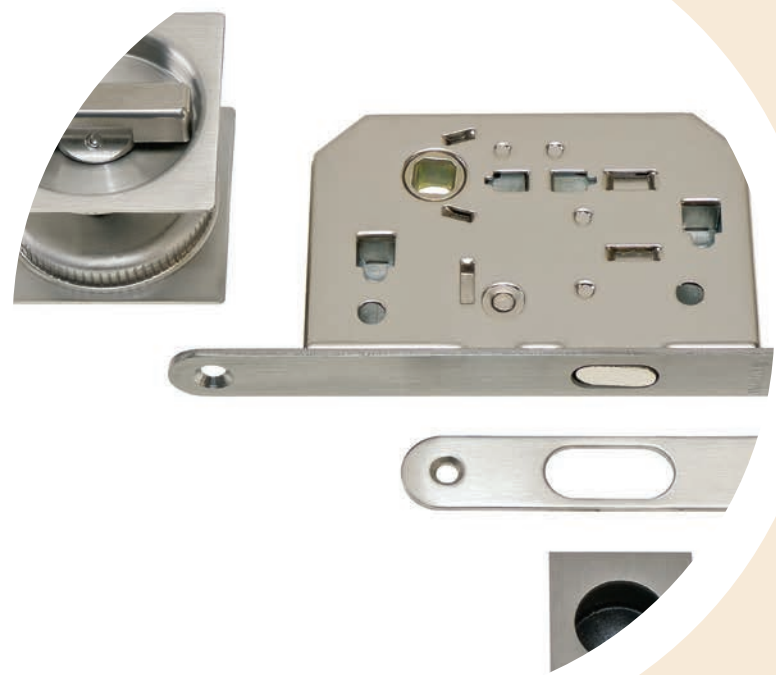
Vale de Cambra
Rua da Vicaima
T. +351 256 426 400

Albufeira
Malhada Velha - Ferreiras
T. +351 289 580 640

Vilar do Pinheiro
Via José Régio, 256
T. +351 229 069 040

geral@globaldis.pt
globaldis.pt

Contact Center 808 50 50 30



Metal Hardware

locks, handles and hinges

Metal hardware represents a distinctive complement in appearance and doors mechanism.

GLOBALDIS displays a wide range of metal hardware solutions to respond promptly to every demanding project, whether it has to do with form or finishing, combining aesthetics with quality, having always in mind a rigorous criterion regarding the mechanism of the product.



Metal Hardware

recovery springs, emergency push bars, grids, sealing bars

In the particular case of technical doors, metal hardware is a fundamental complement to ensure the demanding requirements for its intended purpose.

GLOBALDIS, in partnership with benchmarks, aims heavily on offering the best solutions available on the market, adequate to the specificity of the project; technically compatible with the legal and regulatory context for security matters against fire or acoustic, with high recognized standards and duly certified.



Glue

adhesives Lorcol®

The constant concern in contributing for the technical quality of manufacturing, assembly and installation of wood elements and components, **GLOBALDIS** displays, in its solution catalogue, Lorcol® glue.

Its range of products includes wood industry adhesives in general, namely for carpentry, with high mechanical strength and quick drying.

